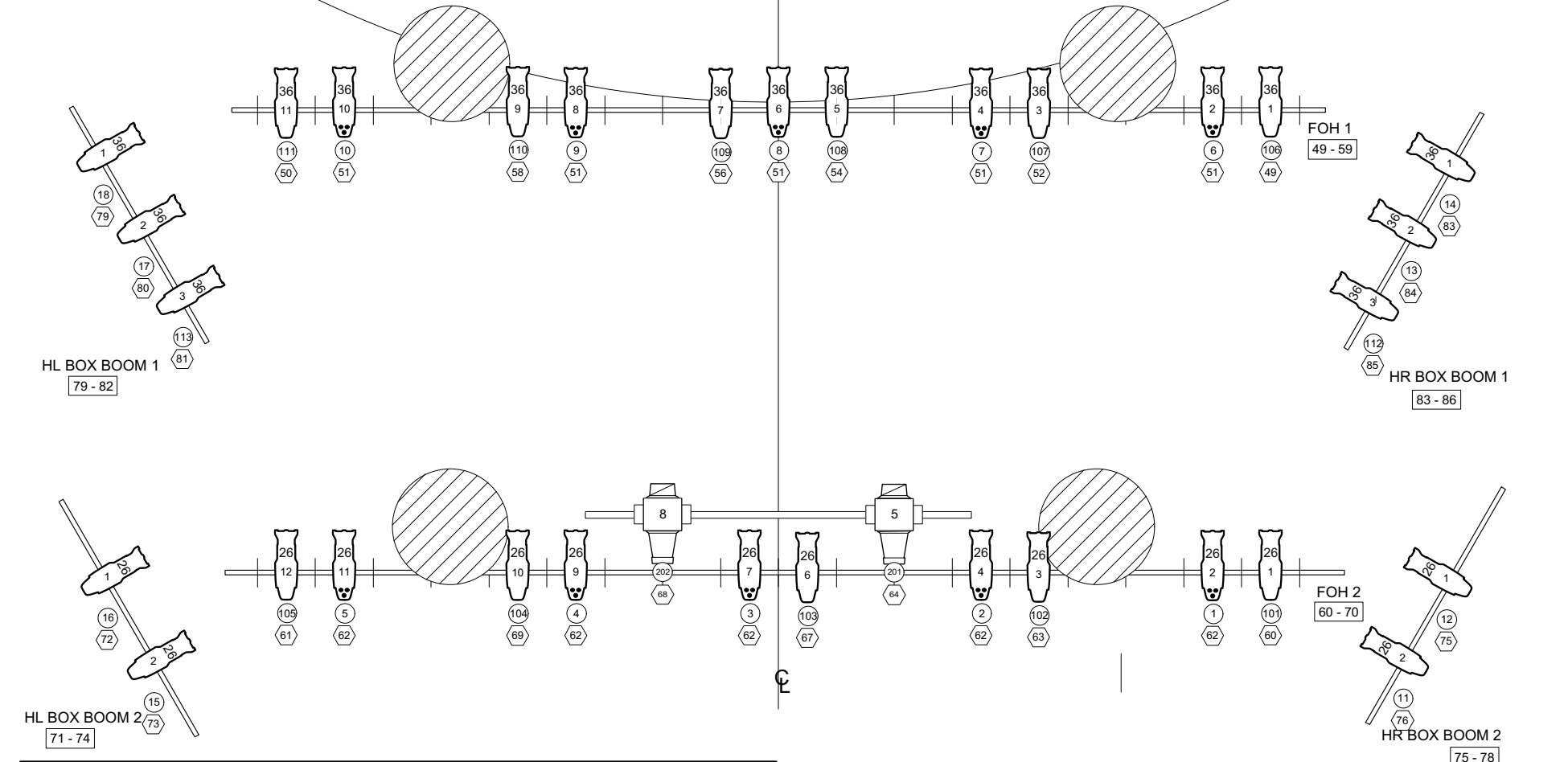


NOTES:
 SL & SR PIPES ARE +10' - 0" FROM STAGE FLOOR.
 SIDEARMED UNITS ON SL & SR PIPES ARE +7' - 0" FROM STAGE FLOOR.



SYMBOLS	
	ETC S4 26 DEGREE 575W
	ETC S4 36 DEGREE 575W
	ETC S4 50 DEGREE 575W
	ETC LUSTR 2 26 DEGREE
	ETC LUSTR 2 36 DEGREE
	ETC SOURCE FOUR PAR WFL 575W
	ETC ColorSource PAR Deep Blue MR
	ALTMAN SPECTRA CYC 200
	VL 1100 TUNGSTEN ERS 1000W
	SYLVANIA KREIOS
	71 - 74 ← CIRCUITS
	UNIT
	CHANNEL
	CIRCUIT

REPERTORY LIGHT PLOT FLORENCE GOULD HALL	
DRAWN NOVEMBER 2005 REVISION 1: SEPTEMBER 2006 REVISION 2: SEPTEMBER 2007 REVISION 3: SEPTEMBER 2012 REVISED: AUGUST 2018	SCALE: 1/4" = 1' - 0" SIZE: 11" x 17" PLATE 1 OF 1
DESIGNED BY DANIELLE COLBURN AND LAURA WILLIAMS	